

CATTLE, ALL BEEF: PRICES RECEIVED, MONTHLY AND MARKETING YEAR AVERAGE, UNITED STATES, 1909 TO DATE

Cattle1

(DOLLARS PER CWT)

RECORD HIGH: 78.50 RECORD LOW: 3.28

YEAR	JAN	FEB	MAR	APR	MAY	JUN	JUL	AUG	SEP	OCT	NOV	DEC	MYA
1993	74.20	75.10											
1992	68.90	72.50	72.80	72.60	71.90	70.20	70.60	71.80	71.80	71.80	70.20	70.80	71.30
1991	76.60	77.00	78.50	78.00	75.90	73.60	71.60	68.80	68.70	70.40	67.90	67.40	72.70
1990	73.60	74.60	74.30	74.70	74.60	74.20	73.60	76.00	75.00	75.50	75.30	76.10	74.60
1989	70.60	71.60	72.00	70.10	68.80	67.60	68.00	69.70	68.20	68.70	69.80	71.00	69.50
1988	65.40	67.40	68.30	69.00	69.30	65.00	63.20	65.90	67.20	67.00	66.70	67.20	66.60
1987	56.40	58.80	59.30	62.60	63.00	62.50	61.10	61.90	63.70	62.90	62.00	62.20	61.10
1986	53.20	53.00	52.40	50.30	51.00	50.10	52.90	54.40	54.60	54.40	54.60	53.20	52.60
1985	57.40	58.50	57.30	56.20	55.30	53.60	50.20	49.40	49.10	52.10	54.70	53.70	53.70
1984	57.20	59.70	61.70	60.10	58.60	57.60	57.60	56.60	55.70	54.10	54.80	57.00	57.30
1983	54.30	57.10	59.70	61.00	59.90	58.30	55.80	54.20	52.30	51.70	51.20	54.50	55.50
1982	53.50	56.30	58.60	60.10	62.60	61.10	58.80	58.10	55.60	53.80	52.60	52.50	56.70
1981	60.40	59.40	58.20	61.00	60.50	61.40	60.50	59.70	58.80	55.70	54.50	52.00	58.60
1980	63.80	67.00	64.40	60.60	60.70	61.10	63.20	64.40	63.00	62.10	60.00	59.40	62.40
1979	60.20	64.70	70.60	73.40	71.90	66.80	65.50	62.20	66.80	64.60	63.90	64.40	66.10
1978	37.70	40.50	44.00	47.20	50.50	51.10	50.10	49.30	52.20	53.20	51.90	54.60	48.50
1977	32.20	33.20	33.80	35.30	36.30	34.00	34.90	34.50	34.70	35.10	34.30	35.50	34.40
1976	32.80	33.90	33.40	38.00	37.10	36.40	33.60	33.00	32.30	32.20	31.20	32.40	33.70
1975	27.40	26.80	27.80	31.60	35.30	36.80	35.20	32.30	34.00	33.40	32.30	33.50	32.20
1974	44.20	43.60	40.70	39.20	37.30	32.60	35.30	37.00	32.60	30.60	28.20	27.70	35.60
1973	37.90	40.70	43.80	42.80	43.60	43.90	44.60	51.70	46.70	42.70	39.60	37.70	42.80
1972	31.80	32.90	32.50	32.20	33.30	34.50	34.60	33.60	34.00	34.40	33.00	34.80	33.50
1971	26.10	28.90	28.80	29.10	29.50	28.90	28.50	29.30	29.20	29.30	29.90	30.30	29.00
1970	26.40	27.40	29.00	28.70	27.90	28.10	28.10	27.10	26.80	26.50	25.10	24.40	27.10
1969	23.80	24.30	25.40	26.70	28.60	29.40	27.90	26.90	26.10	25.40	24.90	25.60	26.20
1968	21.90	22.90	23.40	23.60	23.70	23.80	24.00	23.90	23.60	23.00	23.00	23.50	23.40
1967	21.80	21.70	21.50	21.80	22.30	23.00	23.20	23.30	23.00	22.30	21.40	21.70	22.30
1966	21.10	22.40	23.80	23.60	23.00	22.50	21.90	22.40	22.50	21.90	20.90	21.00	22.20
1965	18.00	18.20	18.60	19.20	20.50	21.30	21.00	20.60	20.60	20.10	19.70	20.30	19.90
1964	18.70	18.30	18.80	18.20	17.60	17.50	18.10	18.20	18.60	17.80	17.50	17.40	18.00
1963	21.70	20.40	19.70	20.50	19.70	19.70	20.70	20.40	20.10	19.60	18.60	17.60	19.90
1962	20.80	21.00	21.10	21.30	21.30	20.90	21.00	21.60	22.00	21.70	21.50	21.50	21.30
1961	20.90	20.70	20.80	20.50	19.70	19.40	19.20	20.10	20.20	20.00	20.10	20.50	20.20

CATTLE, ALL BEEF: PRICES RECEIVED, MONTHLY AND MARKETING YEAR AVERAGE, UNITED STATES, 1909 TO DATE

Cattle1

(DOLLARS PER CWT)

RECORD HIGH: 78.50 RECORD LOW: 3.28

YEAR	JAN	FEB	MAR	APR	MAY	JUN	JUL	AUG	SEP	OCT	NOV	DEC	MYA
1960	20.50	20.90	21.80	21.80	21.70	20.80	20.30	19.60	19.40	19.00	19.20	20.20	20.40
1959	23.20	23.00	23.60	24.20	24.40	23.80	23.30	22.90	22.70	21.50	20.20	19.80	22.60
1958	19.70	20.60	21.80	22.30	23.10	22.50	22.30	21.60	22.40	22.50	22.40	22.50	21.90
1957	14.80	14.90	16.00	16.90	17.60	17.80	18.40	18.20	17.70	17.40	17.80	18.60	17.20
1956	14.00	14.10	14.50	15.00	15.30	15.40	15.30	16.10	16.10	15.10	14.50	14.00	14.90
1955	16.00	16.20	16.40	16.70	16.30	16.40	16.10	15.70	15.60	15.20	14.00	13.50	15.60
1954	15.90	16.10	16.40	16.90	17.40	16.60	15.50	15.70	15.80	15.60	15.10	15.20	16.00
1953	19.10	18.50	17.70	17.30	17.50	16.00	17.10	16.10	15.60	14.60	14.50	14.80	16.30
1952	27.20	27.50	27.50	27.70	27.80	26.20	25.60	24.60	23.20	21.40	20.30	19.00	24.30
1951	27.10	19.10	29.80	30.30	29.70	29.50	29.00	28.90	29.20	28.40	27.50	27.30	28.70
1950	19.70	20.50	21.20	21.90	23.10	23.70	24.40	24.20	24.60	24.20	24.60	25.20	23.30
1949	20.20	18.90	20.70	21.00	21.10	20.90	20.00	19.40	19.70	19.20	18.90	19.00	19.80
1948	21.30	20.10	21.50	22.50	23.90	24.40	25.20	23.70	23.30	21.20	20.80	20.40	22.20
1947	16.70	17.00	18.00	18.30	18.80	19.30	19.50	19.00	19.00	18.30	18.20	19.50	18.40
1946	12.00	12.60	13.10	13.60	13.70	13.80	15.70	15.70	13.80	16.00	16.20	16.50	14.50
1945	11.00	11.60	12.50	13.10	13.40	13.40	13.00	12.40	11.80	11.50	11.30	11.50	12.10
1944	11.20	11.60	12.00	12.10	12.00	11.70	10.90	10.30	10.10	9.71	9.79	10.10	10.80
1943	11.80	12.30	12.80	13.00	12.90	12.70	12.40	12.00	11.70	11.10	10.60	10.90	11.90
1942	9.72	9.89	10.10	10.50	10.60	10.70	10.70	11.10	11.00	11.00	11.00	11.20	10.70
1941	8.37	8.31	8.27	8.55	8.51	8.61	8.73	9.04	9.32	9.14	8.82	9.34	8.82
1940	7.19	7.03	7.16	7.32	7.51	7.28	7.48	7.51	7.77	7.78	7.88	7.84	7.56
1939	6.97	7.12	7.26	7.35	7.33	7.05	6.91	6.74	7.36	7.25	7.14	7.11	7.14
1938	6.21	6.02	6.35	6.52	6.50	6.65	7.14	6.70	6.79	6.63	6.62	6.67	6.54
1937	6.60	6.63	7.02	7.26	7.46	7.48	7.67	7.40	7.36	6.79	6.33	6.15	7.00
1936	6.11	6.03	6.04	6.29	6.20	5.98	5.60	5.52	5.72	5.58	5.68	6.01	5.82
1935	5.17	5.93	6.57	6.94	7.10	6.80	6.27	6.18	6.08	5.81	5.67	5.95	6.04
1934	3.48	3.86	3.97	4.06	4.37	4.26	4.16	3.99	4.55	4.26	4.09	4.13	4.13
1933	3.42	3.46	3.57	3.66	4.09	4.17	4.11	3.96	3.81	3.71	3.50	3.28	3.75
1932	4.49	4.21	4.40	4.35	4.03	3.99	4.80	4.61	4.55	4.18	3.99	3.63	4.25
1931	6.72	6.25	6.22	6.18	5.82	5.43	5.33	5.32	5.25	5.01	5.10	4.59	5.53
1930	9.07	9.05	9.11	8.96	8.64	8.45	7.33	6.51	6.99	6.87	6.75	6.68	7.71
1929	9.30	9.16	9.43	9.81	10.00	10.00	10.20	9.96	9.53	9.21	8.92	8.81	9.47
1928	8.88	9.09	9.14	9.18	9.32	9.39	9.56	9.87	10.40	9.99	9.55	9.25	9.52

CATTLE, ALL BEEF: PRICES RECEIVED, MONTHLY AND MARKETING YEAR AVERAGE, UNITED STATES, 1909 TO DATE

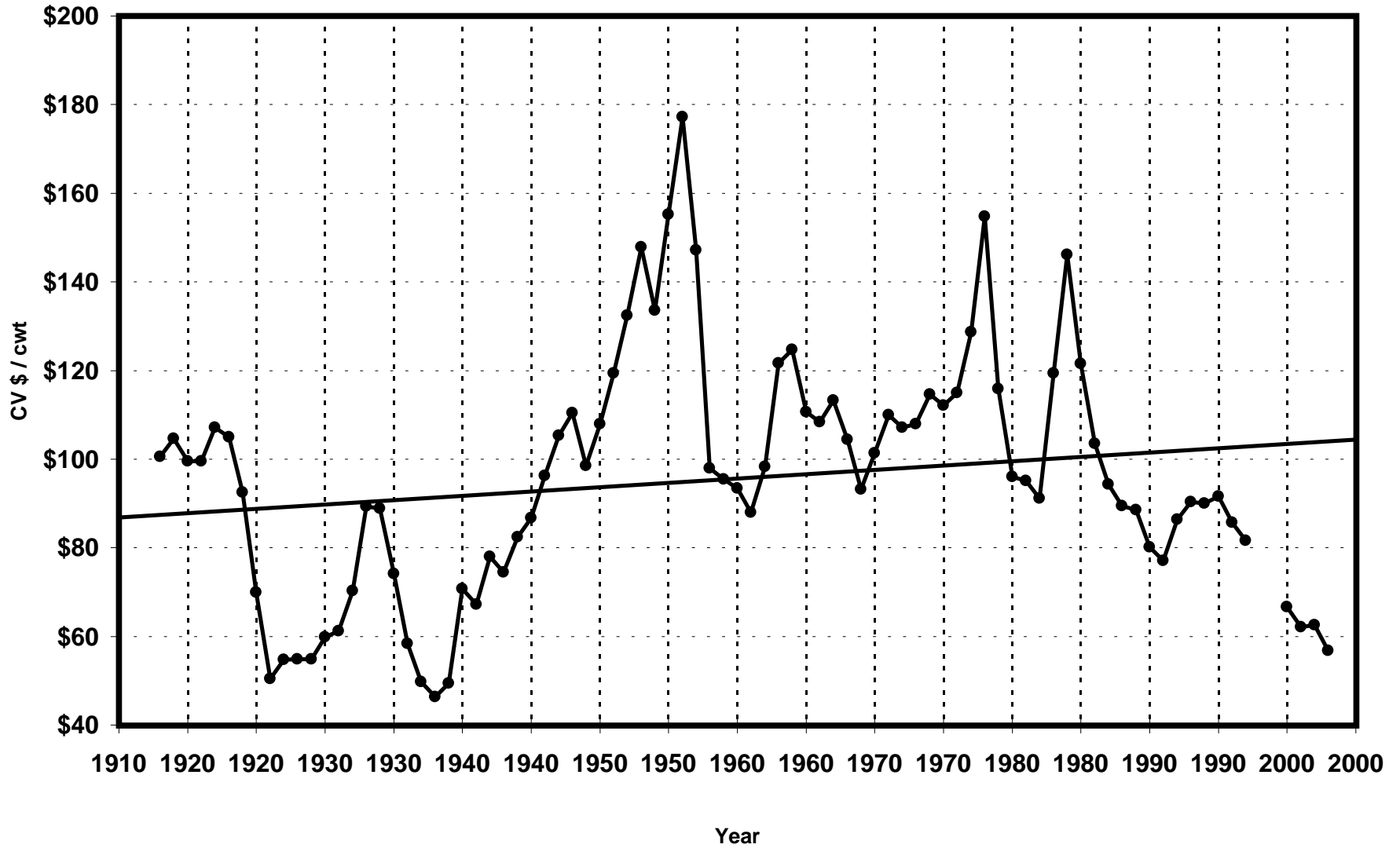
Cattle1

(DOLLARS PER CWT)

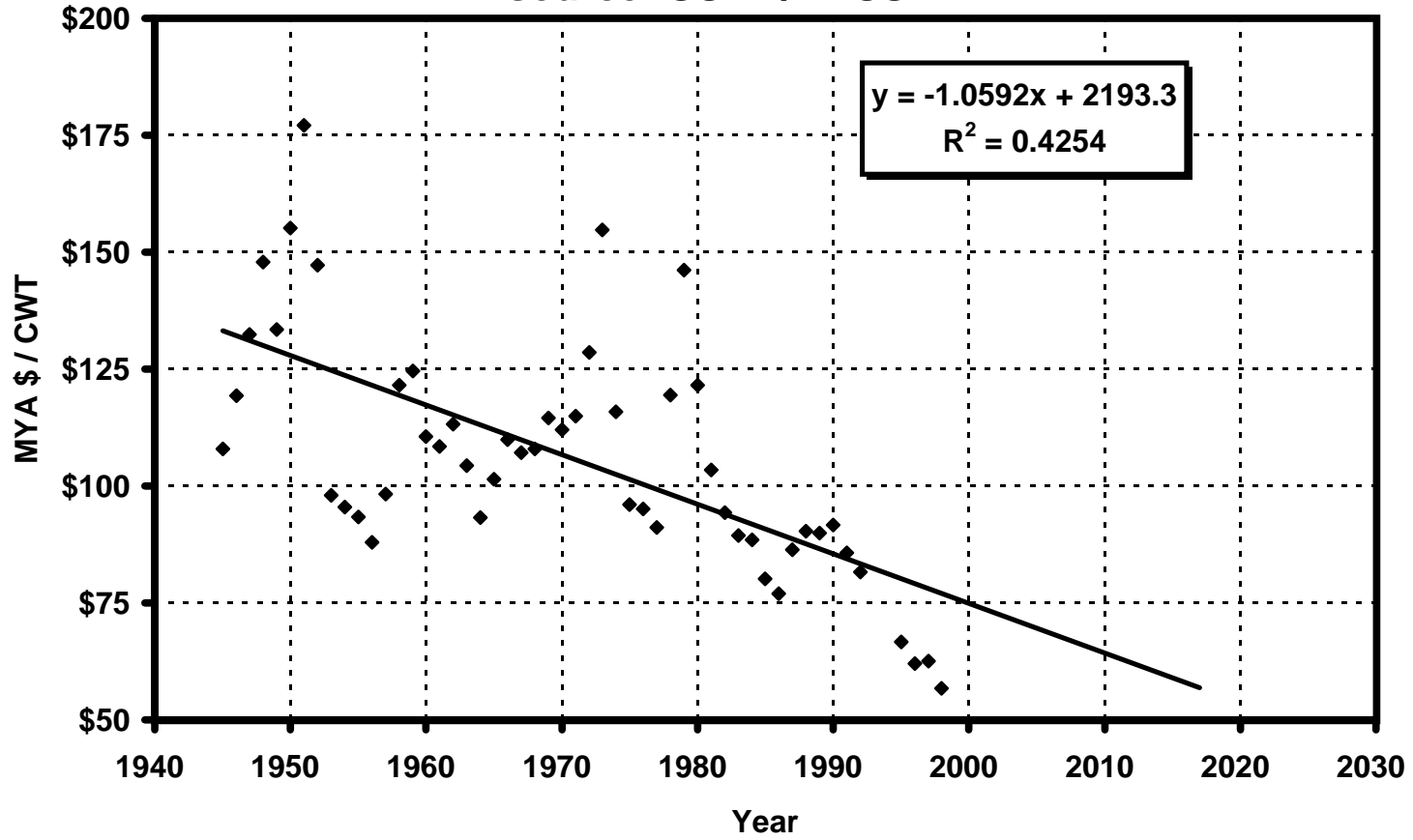
RECORD HIGH: 78.50 RECORD LOW: 3.28

YEAR	JAN	FEB	MAR	APR	MAY	JUN	JUL	AUG	SEP	OCT	NOV	DEC	MYA
1927	6.71	6.95	7.17	7.47	7.52	7.45	7.52	7.56	7.81	7.96	8.43	8.75	7.62
1926	6.69	6.75	6.96	6.97	6.87	6.90	6.79	6.61	6.79	6.76	6.63	6.68	6.75
1925	5.88	5.95	6.45	6.81	6.73	6.73	6.88	6.95	6.58	6.59	6.41	6.46	6.53
1924	5.62	5.71	5.90	6.09	6.22	6.06	5.92	6.01	5.86	5.79	5.69	5.64	5.84
1923	5.77	5.80	5.85	6.03	6.03	6.10	6.01	5.88	6.01	5.75	5.47	5.52	5.84
1922	4.93	5.30	5.71	5.75	5.95	6.13	6.08	5.83	5.80	5.87	5.62	5.61	5.73
1921	6.47	6.11	6.56	6.22	6.14	5.78	5.57	5.60	5.17	4.99	4.83	4.80	5.63
1920	9.39	9.24	9.36	9.48	9.25	9.74	9.25	8.87	8.68	8.07	7.38	6.48	8.71
1919	10.10	10.60	10.90	11.40	11.40	10.60	10.40	10.30	9.35	8.92	9.05	9.01	9.97
1918	8.61	8.83	9.17	10.20	10.90	10.80	10.50	10.20	10.10	9.72	9.53	9.77	9.88
1917	7.21	7.75	8.23	8.96	9.04	9.02	8.68	8.54	8.77	8.72	8.54	8.53	8.54
1916	6.07	6.23	6.68	6.95	7.02	7.28	7.11	6.80	6.84	6.65	6.71	6.86	6.76
1915	6.18	6.09	6.10	6.15	6.39	6.45	6.69	6.45	6.31	6.30	6.07	5.95	6.26
1914	6.32	6.47	6.57	6.58	6.61	6.55	6.64	6.79	6.66	6.49	6.32	6.26	6.52
1913	5.70	5.87	6.22	6.42	6.31	6.34	6.27	6.18	6.20	6.29	6.26	6.21	6.20
1912	4.66	4.82	4.96	5.39	5.60	5.50	5.45	5.68	5.66	5.67	5.49	5.65	5.43
1911	4.67	4.67	4.78	4.78	4.70	4.55	4.41	4.50	4.58	4.44	4.50	4.54	4.57
1910	4.78	4.73	5.06	5.46	5.32	5.31	4.93	4.67	4.77	4.73	4.53	4.51	4.86
1909								5.41	5.49	5.36	5.19	5.05	4.50

Cattle prices in CV(1997CPI) 4 / cwt



MYA U. S. Cattle prices 1945 - 1998 CV\$ (1997 CPI) / CWT
source: USDA/NASS



CATTLE1

	1996 cpi\$	
year	\$/cwt	
1945	\$107.89	
1946	\$119.35	
1947	\$132.43	
1948	\$147.85	
1949	\$133.53	
1950	\$155.17	
1951	\$177.17	
1952	\$147.18	
1953	\$97.98	
1954	\$95.46	
1955	\$93.43	
1956	\$87.92	
1957	\$98.24	
1958	\$121.62	
1959	\$124.65	
1960	\$110.61	
1961	\$108.43	
1962	\$113.20	
1963	\$104.38	
1964	\$93.19	
1965	\$101.40	
1966	\$109.97	
1967	\$107.16	
1968	\$107.92	
1969	\$114.58	
1970	\$112.10	
1971	\$114.93	
1972	\$128.63	
1973	\$154.72	
1974	\$115.90	
1975	\$96.06	
1976	\$95.06	
1977	\$91.11	
1978	\$119.39	
1979	\$146.13	
1980	\$121.54	
1981	\$103.47	
1982	\$94.30	
1983	\$89.44	
1984	\$88.51	
1985	\$80.10	
1986	\$77.03	
1987	\$86.33	
1988	\$90.36	
1989	\$89.96	
1990	\$91.61	
1991	\$85.67	
1992	\$81.57	
1993		
1994		
1995	\$66.66	

1996	\$62.09	
1997	\$62.57	
1998	\$56.76	
1999		
2000		
2001		
2002		
2003		
2004		
2005		
2006		
2007		
2008		
2009		
2010		

Cattle1					
YEAR	MYA	CPI	CPI	MYA	
	curr\$/cwt	1983=100	1997=100	CV1997CPI\$	
1909	\$4.50				
1910	\$4.86				
1911	\$4.57				
1912	\$5.43				
1913	\$6.20	9.90	0.06	\$100.52	
1914	\$6.52	10.00	0.06	\$104.65	
1915	\$6.26	10.10	0.06	\$99.48	
1916	\$6.76	10.90	0.07	\$99.54	
1917	\$8.54	12.80	0.08	\$107.08	
1918	\$9.88	15.10	0.09	\$105.02	
1919	\$9.97	17.30	0.11	\$92.50	
1920	\$8.71	20.00	0.12	\$69.90	
1921	\$5.63	17.90	0.11	\$50.48	
1922	\$5.73	16.80	0.10	\$54.74	
1923	\$5.84	17.10	0.11	\$54.81	
1924	\$5.84	17.10	0.11	\$54.81	
1925	\$6.53	17.50	0.11	\$59.89	
1926	\$6.75	17.70	0.11	\$61.21	
1927	\$7.62	17.40	0.11	\$70.29	
1928	\$9.52	17.10	0.11	\$89.35	
1929	\$9.47	17.10	0.11	\$88.89	
1930	\$7.71	16.70	0.10	\$74.10	
1931	\$5.53	15.20	0.09	\$58.39	
1932	\$4.25	13.70	0.09	\$49.79	
1933	\$3.75	13.00	0.08	\$46.30	
1934	\$4.13	13.40	0.08	\$49.47	
1935	\$6.04	13.70	0.09	\$70.76	
1936	\$5.82	13.90	0.09	\$67.20	
1937	\$7.00	14.40	0.09	\$78.02	
1938	\$6.54	14.10	0.09	\$74.44	
1939	\$7.14	13.90	0.09	\$82.44	
1940	\$7.56	14.00	0.09	\$86.67	
1941	\$8.82	14.70	0.09	\$96.30	
1942	\$10.70	16.30	0.10	\$105.36	
1943	\$11.90	17.30	0.11	\$110.40	
1944	\$10.80	17.60	0.11	\$98.49	
1945	\$12.10	18.00	0.11	\$107.89	
1946	\$14.50	19.50	0.12	\$119.35	
1947	\$18.40	22.30	0.14	\$132.43	
1948	\$22.20	24.10	0.15	\$147.85	
1949	\$19.80	23.80	0.15	\$133.53	
1950	\$23.30	24.10	0.15	\$155.17	
1951	\$28.70	26.00	0.16	\$177.17	
1952	\$24.30	26.50	0.17	\$147.18	
1953	\$16.30	26.70	0.17	\$97.98	
1954	\$16.00	26.90	0.17	\$95.46	
1955	\$15.60	26.80	0.17	\$93.43	
1956	\$14.90	27.20	0.17	\$87.92	
1957	\$17.20	28.10	0.18	\$98.24	

Sheet1

1958	\$21.90	28.90	0.18	\$121.62
1959	\$22.60	29.10	0.18	\$124.65
1960	\$20.40	29.60	0.18	\$110.61
1961	\$20.20	29.90	0.19	\$108.43
1962	\$21.30	30.20	0.19	\$113.20
1963	\$19.90	30.60	0.19	\$104.38
1964	\$18.00	31.00	0.19	\$93.19
1965	\$19.90	31.50	0.20	\$101.40
1966	\$22.20	32.40	0.20	\$109.97
1967	\$22.30	33.40	0.21	\$107.16
1968	\$23.40	34.80	0.22	\$107.92
1969	\$26.20	36.70	0.23	\$114.58
1970	\$27.10	38.80	0.24	\$112.10
1971	\$29.00	40.50	0.25	\$114.93
1972	\$33.50	41.80	0.26	\$128.63
1973	\$42.80	44.40	0.28	\$154.72
1974	\$35.60	49.30	0.31	\$115.90
1975	\$32.20	53.80	0.34	\$96.06
1976	\$33.70	56.90	0.35	\$95.06
1977	\$34.40	60.60	0.38	\$91.11
1978	\$48.50	65.20	0.41	\$119.39
1979	\$66.10	72.60	0.45	\$146.13
1980	\$62.40	82.40	0.51	\$121.54
1981	\$58.60	90.90	0.57	\$103.47
1982	\$56.70	96.50	0.60	\$94.30
1983	\$55.50	99.60	0.62	\$89.44
1984	\$57.30	103.90	0.65	\$88.51
1985	\$53.70	107.60	0.67	\$80.10
1986	\$52.60	109.60	0.68	\$77.03
1987	\$61.10	113.60	0.71	\$86.33
1988	\$66.60	118.30	0.74	\$90.36
1989	\$69.50	124.00	0.77	\$89.96
1990	\$74.60	130.70	0.81	\$91.61
1991	\$72.70	136.20	0.85	\$85.67
1992	\$71.30	140.30	0.87	\$81.57
1993		144.50	0.90	
1994		148.20	0.92	
1995	\$63.30	152.40	0.95	\$66.66
1996	\$60.70	156.90	0.98	\$62.09
1997	\$63.20	160.50	1.01	\$62.57
1998	\$57.90		1.02	\$56.76
1999				
2000				
			Average	\$95.52
			SD	\$26.90
			Max	\$177.17
			Min	\$46.30
			Range	\$130.87
			Median	\$95.26