

HOGS, ALL: PRICES RECEIVED, MONTHLY AND MARKETING YEAR AVERAGE, UNITED STATES, 1909 TO DATE

HOGS1

(DOLLARS PER CWT)

RECORD HIGH: 62.10 RECORD LOW: 2.59

YEAR	JAN	FEB	MAR	APR	MAY	JUN	JUL	AUG	SEP	OCT	NOV	DEC	MYA
1993	41.40	44.20	46.80	45.50	46.80								44.94
1992	36.80	40.20	39.10	41.00	45.10	46.70	44.60	44.10	42.10	42.00	41.10	41.80	41.60
1991	50.00	52.20	51.50	50.90	54.10	54.70	54.20	51.20	46.40	43.60	38.00	38.60	49.10
1990	47.30	48.20	51.30	53.80	61.20	60.30	60.80	55.90	54.30	56.80	50.20	47.80	53.70
1989	40.90	40.40	39.30	36.90	41.60	45.10	45.90	45.60	43.40	46.60	45.00	48.20	42.50
1988	43.00	45.80	42.20	41.90	46.30	47.10	44.10	44.70	40.70	38.70	36.20	39.70	42.30
1987	47.20	48.20	47.40	50.80	54.40	59.20	59.60	58.60	54.30	48.90	40.60	40.30	51.20
1986	44.30	42.80	40.40	39.70	45.80	52.60	59.00	62.10	58.30	53.10	52.80	50.60	49.30
1985	48.00	48.30	43.60	41.20	41.40	44.60	45.70	42.50	39.70	43.10	43.20	45.30	44.00
1984	48.40	45.40	45.80	47.50	47.20	49.00	52.00	50.50	46.30	43.60	47.00	48.60	47.10
1983	55.30	56.10	50.40	46.90	45.90	43.90	43.40	46.70	44.10	40.40	37.50	44.20	46.80
1982	43.40	48.30	48.60	51.20	56.70	57.50	57.80	61.20	61.30	55.80	52.50	53.60	52.30
1981	40.90	41.30	38.80	39.00	40.90	47.40	49.30	49.20	48.60	45.00	41.50	39.00	43.90
1980	36.20	36.70	33.40	28.00	28.60	33.10	41.20	46.20	46.10	47.20	45.60	43.80	38.00
1979	50.70	52.60	48.30	44.10	43.20	39.60	37.90	36.20	37.20	33.80	34.50	36.90	41.80
1978	43.90	47.40	46.40	45.00	47.90	47.60	45.40	47.40	48.00	50.80	47.30	48.00	46.60
1977	38.10	39.40	37.20	36.00	40.70	42.00	44.80	42.80	40.30	39.90	37.80	41.80	39.40
1976	47.70	48.00	45.60	47.00	47.60	49.20	47.60	42.60	39.70	32.90	31.20	36.60	43.30
1975	38.20	38.50	38.60	39.30	45.10	47.40	53.90	56.10	58.60	58.30	49.10	47.60	46.10
1974	40.10	39.30	35.00	30.60	26.30	24.20	34.30	36.00	33.70	37.10	36.80	38.40	34.20
1973	31.00	34.30	38.20	35.10	35.30	37.30	41.30	56.30	43.80	40.90	40.50	38.20	38.40
1972	22.80	25.60	23.30	22.50	24.90	25.60	27.50	28.00	28.10	27.40	26.80	29.60	25.10
1971	15.30	19.10	16.90	15.90	17.00	17.50	19.00	18.50	17.90	19.50	18.80	19.70	17.50
1970	26.40	27.50	25.60	23.80	23.00	23.20	23.80	21.60	19.70	17.90	15.40	15.10	22.70
1969	18.70	19.60	20.00	19.70	22.30	24.00	24.90	25.90	24.90	24.80	25.00	25.80	22.20
1968	17.60	18.90	18.60	18.50	18.30	19.40	20.80	19.20	19.50	17.90	17.50	17.80	18.50
1967	19.00	18.90	17.90	17.00	21.50	21.10	21.50	20.40	19.10	18.00	17.10	16.70	19.10
1966	27.30	27.20	24.00	22.10	22.30	23.20	23.20	24.50	22.30	21.20	19.30	18.90	23.50
1965	15.50	16.40	16.40	16.90	19.70	22.40	23.20	23.70	22.10	22.90	23.50	26.90	19.60
1964	14.30	14.30	14.20	14.00	14.30	14.90	16.00	15.80	16.20	15.10	14.00	14.80	14.80
1963	15.40	14.80	13.80	13.50	14.40	16.10	17.10	16.70	15.50	15.20	14.20	13.60	14.90
1962	16.50	16.30	15.90	15.50	15.20	15.90	17.00	17.50	18.10	16.60	16.20	15.70	16.30
1961	16.70	17.60	17.10	16.80	16.10	15.80	16.60	17.30	17.50	16.60	15.70	16.10	16.60

HOGS, ALL: PRICES RECEIVED, MONTHLY AND MARKETING YEAR AVERAGE, UNITED STATES, 1909 TO DATE

HOGS1

(DOLLARS PER CWT)

RECORD HIGH: 62.10 RECORD LOW: 2.59

YEAR	JAN	FEB	MAR	APR	MAY	JUN	JUL	AUG	SEP	OCT	NOV	DEC	MYA
1960	12.10	13.00	15.00	15.50	15.40	16.00	16.60	16.30	15.70	16.70	16.60	16.50	15.30
1959	16.40	15.40	15.50	15.50	15.40	14.90	13.40	13.80	13.30	12.60	12.10	11.30	14.10
1958	18.50	19.50	20.30	20.20	21.10	21.60	21.70	20.80	19.90	18.50	17.90	17.50	19.60
1957	17.30	16.80	16.90	17.40	17.40	18.40	19.30	20.20	19.10	17.00	16.60	17.80	17.80
1956	11.00	12.10	12.40	14.40	15.40	15.70	15.30	16.20	15.70	15.50	14.30	16.20	14.40
1955	16.80	16.30	15.50	16.60	16.40	17.70	16.40	15.70	15.70	14.50	12.10	10.60	15.00
1954	24.70	25.30	25.00	26.40	24.70	21.50	20.40	21.10	19.70	18.40	18.50	17.00	21.60
1953	17.90	19.30	20.20	21.00	23.10	22.80	23.70	23.30	23.90	21.30	20.30	23.00	21.40
1952	17.30	17.10	16.60	16.40	19.20	19.40	19.70	20.60	19.00	18.50	16.60	16.10	17.80
1951	20.00	21.90	21.20	20.60	20.40	20.90	20.50	20.90	19.80	20.20	18.10	17.60	20.00
1950	15.10	16.60	16.00	15.70	18.30	18.20	20.90	21.70	21.30	19.20	17.80	17.80	18.00
1949	19.60	19.30	20.00	18.30	17.90	18.80	18.60	19.40	19.80	17.60	15.60	14.80	18.10
1948	26.60	21.60	21.50	20.30	19.90	22.90	25.20	26.90	27.40	24.70	21.80	20.90	23.10
1947	21.90	24.30	26.50	23.90	22.20	22.10	22.00	23.60	26.70	27.10	24.30	25.20	24.10
1946	14.10	14.20	14.20	14.20	14.30	14.30	17.20	20.80	16.10	22.20	23.00	22.80	17.50
1945	13.80	14.00	14.00	14.10	14.10	14.10	14.10	14.00	14.10	14.10	14.20	14.20	14.00
1944	12.80	12.90	12.90	13.00	12.70	12.60	12.70	13.50	13.60	13.80	13.50	13.40	13.10
1943	14.10	14.60	14.70	14.30	13.90	13.60	13.20	13.70	14.10	14.00	12.90	12.80	13.70
1942	10.70	11.90	12.50	13.50	13.30	13.40	13.80	14.10	13.60	14.10	13.40	13.30	13.00
1941	7.47	7.29	7.16	8.16	8.31	9.12	10.30	10.50	11.20	10.10	9.70	10.30	9.09
1940	5.17	4.96	4.87	4.91	5.37	4.78	5.84	5.90	6.20	5.85	5.61	5.61	5.39
1939	6.97	7.30	7.14	6.59	6.34	5.91	5.96	5.30	6.88	6.50	5.82	4.97	6.23
1938	7.66	7.83	8.53	7.85	7.43	8.14	8.71	7.85	8.19	7.25	7.27	6.91	7.74
1937	9.58	9.38	9.38	9.21	9.63	10.20	11.00	11.80	10.80	9.92	8.26	7.55	9.50
1936	9.09	9.62	9.44	9.68	8.71	9.10	9.28	10.10	9.84	9.24	8.78	9.19	9.37
1935	7.05	7.36	8.46	8.17	8.23	8.66	8.72	10.60	10.60	9.71	8.57	8.80	8.65
1934	2.95	3.86	3.85	3.42	3.06	3.48	3.98	4.68	6.10	5.13	4.98	5.10	4.14
1933	2.59	2.92	3.21	3.20	3.94	3.99	4.00	3.77	3.70	4.19	3.66	2.79	3.53
1932	3.61	3.40	3.87	3.51	2.83	2.71	4.27	4.05	3.73	3.14	2.95	2.60	3.34
1931	7.21	6.74	6.91	6.88	6.26	5.58	6.16	6.20	5.35	4.58	4.21	3.58	5.73
1930	8.84	9.55	9.71	9.26	9.06	9.17	8.38	8.58	9.55	8.82	8.17	7.40	8.84
1929	8.18	8.99	10.30	10.50	10.10	9.92	10.50	10.40	9.56	9.08	8.48	8.50	9.42
1928	7.72	7.55	7.45	7.84	8.95	8.78	9.81	10.20	11.40	9.55	8.46	7.89	8.54

HOGS, ALL: PRICES RECEIVED, MONTHLY AND MARKETING YEAR AVERAGE, UNITED STATES, 1909 TO DATE

HOGS1

(DOLLARS PER CWT)

RECORD HIGH: 62.10 RECORD LOW: 2.59

YEAR	JAN	FEB	MAR	APR	MAY	JUN	JUL	AUG	SEP	OCT	NOV	DEC	MYA
1927	11.00	11.20	10.90	10.40	9.35	8.23	8.45	9.18	9.78	10.20	8.90	8.01	9.64
1926	11.00	11.90	11.80	11.50	12.10	13.00	12.80	11.60	12.10	12.10	11.40	10.90	11.80
1925	9.32	9.66	12.20	11.90	10.90	10.90	12.30	12.40	11.60	11.10	10.50	10.40	10.90
1924	6.42	6.37	6.50	6.60	6.59	6.43	6.50	8.62	8.57	9.61	8.54	8.27	7.34
1923	7.68	7.55	7.44	7.39	6.99	6.09	6.45	6.72	7.81	7.03	6.34	6.08	6.94
1922	6.78	8.54	9.40	9.14	9.35	9.38	9.31	8.52	8.12	8.28	7.53	7.45	8.40
1921	8.38	8.37	9.16	7.74	7.47	7.01	8.16	8.87	7.24	6.99	6.28	6.15	7.63
1920	13.30	13.60	13.70	13.70	13.40	13.20	13.80	13.80	14.30	13.70	11.60	8.50	12.90
1919	16.10	16.00	16.80	18.30	18.90	18.70	20.10	19.90	15.80	13.70	13.30	12.40	16.40
1918	15.40	15.20	15.90	16.10	16.30	15.70	16.00	17.60	18.20	16.80	16.10	16.10	16.10
1917	9.52	11.00	13.30	14.60	14.60	14.40	14.10	15.20	16.50	16.70	15.60	16.00	13.90
1916	6.24	7.25	8.58	8.62	8.77	8.54	8.80	9.01	9.65	8.82	8.90	8.95	8.37
1915	6.42	6.19	6.21	6.44	6.80	6.85	6.85	6.53	6.76	7.30	6.20	5.86	6.47
1914	7.49	7.86	7.93	7.95	7.72	7.46	7.84	8.24	8.19	7.29	6.86	6.51	7.52
1913	6.83	7.33	7.89	8.26	7.63	7.83	8.07	7.90	7.75	7.64	7.27	7.09	7.54
1912	5.69	5.73	5.95	6.97	6.96	6.79	6.78	7.34	7.70	7.99	7.17	6.95	6.73
1911	7.38	6.93	6.50	5.95	5.52	5.49	5.86	6.64	6.55	5.97	5.74	5.62	6.21
1910	7.84	7.97	9.29	9.44	8.65	8.65	8.20	7.73	8.38	8.05	7.44	6.97	8.14
1909								6.97	7.18	7.04	7.23	7.54	6.62

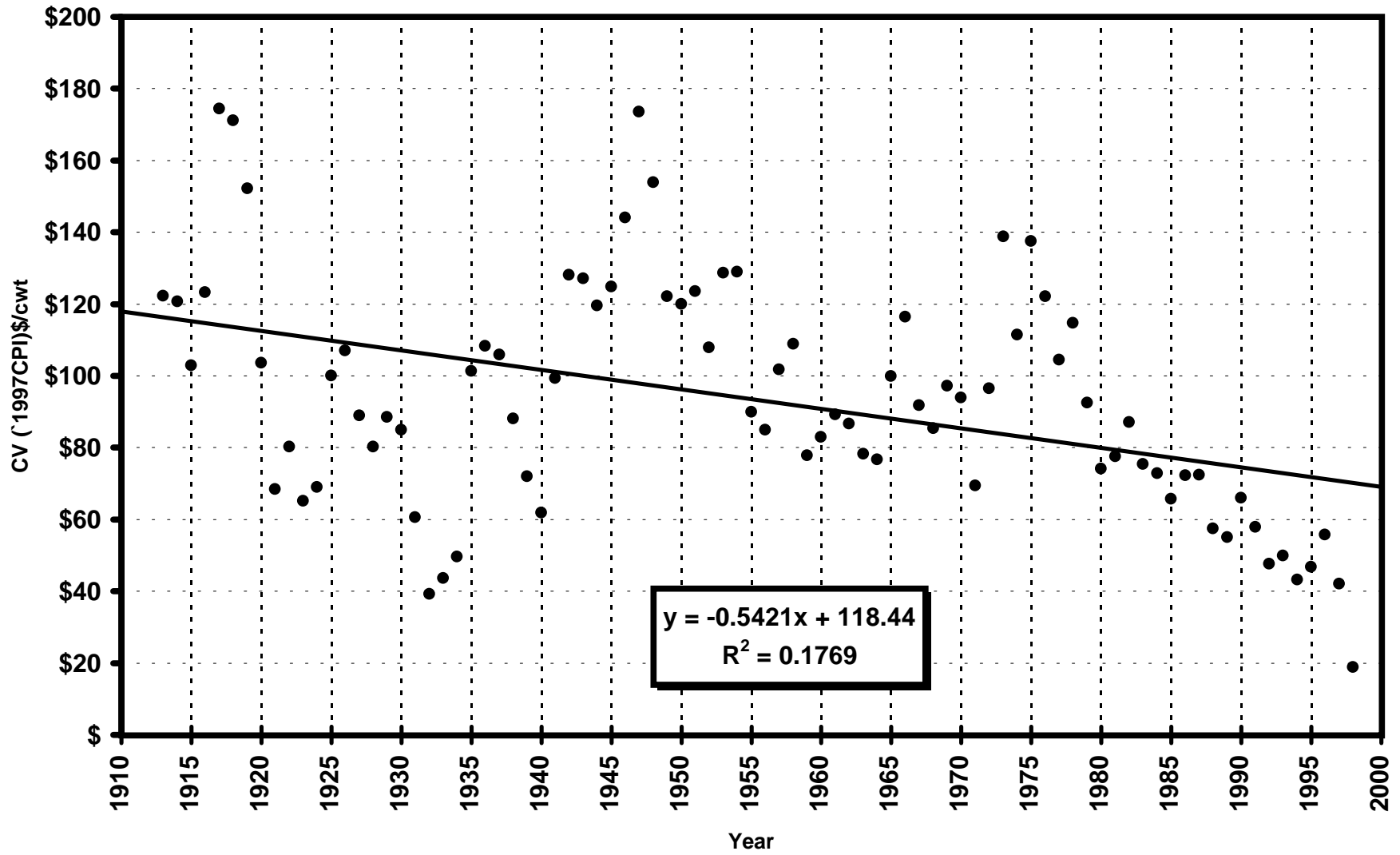
Sheet1

HOGS1					
YEAR	MYA	CPI	CPI	MYA \$/cwt	
	curr \$/cwt	1983=100	1997=100	cv 1997\$	
1909	6.62				
1910	8.14				
1911	6.21				
1912	6.73				
1913	7.54	9.90	0.06	122.24\$	
1914	7.52	10.00	0.06	120.70\$	
1915	6.47	10.10	0.06	102.82\$	
1916	8.37	10.90	0.07	123.25\$	
1917	13.90	12.80	0.08	174.29\$	
1918	16.10	15.10	0.09	171.13\$	
1919	16.40	17.30	0.11	152.15\$	
1920	12.90	20.00	0.12	103.52\$	
1921	7.63	17.90	0.11	68.41\$	
1922	8.40	16.80	0.10	80.25\$	
1923	6.94	17.10	0.11	65.14\$	
1924	7.34	17.10	0.11	68.89\$	
1925	10.90	17.50	0.11	99.97\$	
1926	11.80	17.70	0.11	107.00\$	
1927	9.64	17.40	0.11	88.92\$	
1928	8.54	17.10	0.11	80.16\$	
1929	9.42	17.10	0.11	88.42\$	
1930	8.84	16.70	0.10	84.96\$	
1931	5.73	15.20	0.09	60.50\$	
1932	3.34	13.70	0.09	39.13\$	
1933	3.53	13.00	0.08	43.58\$	
1934	4.14	13.40	0.08	49.59\$	
1935	8.65	13.70	0.09	101.34\$	
1936	9.37	13.90	0.09	108.19\$	
1937	9.50	14.40	0.09	105.89\$	
1938	7.74	14.10	0.09	88.10\$	
1939	6.23	13.90	0.09	71.94\$	
1940	5.39	14.00	0.09	61.79\$	
1941	9.09	14.70	0.09	99.25\$	
1942	13.00	16.30	0.10	128.01\$	
1943	13.70	17.30	0.11	127.10\$	
1944	13.10	17.60	0.11	119.46\$	
1945	14.00	18.00	0.11	124.83\$	
1946	17.50	19.50	0.12	144.04\$	
1947	24.10	22.30	0.14	173.46\$	
1948	23.10	24.10	0.15	153.84\$	
1949	18.10	23.80	0.15	122.06\$	
1950	18.00	24.10	0.15	119.88\$	
1951	20.00	26.00	0.16	123.46\$	
1952	17.80	26.50	0.17	107.81\$	
1953	21.40	26.70	0.17	128.64\$	
1954	21.60	26.90	0.17	128.88\$	
1955	15.00	26.80	0.17	89.83\$	
1956	14.40	27.20	0.17	84.97\$	
1957	17.80	28.10	0.18	101.67\$	

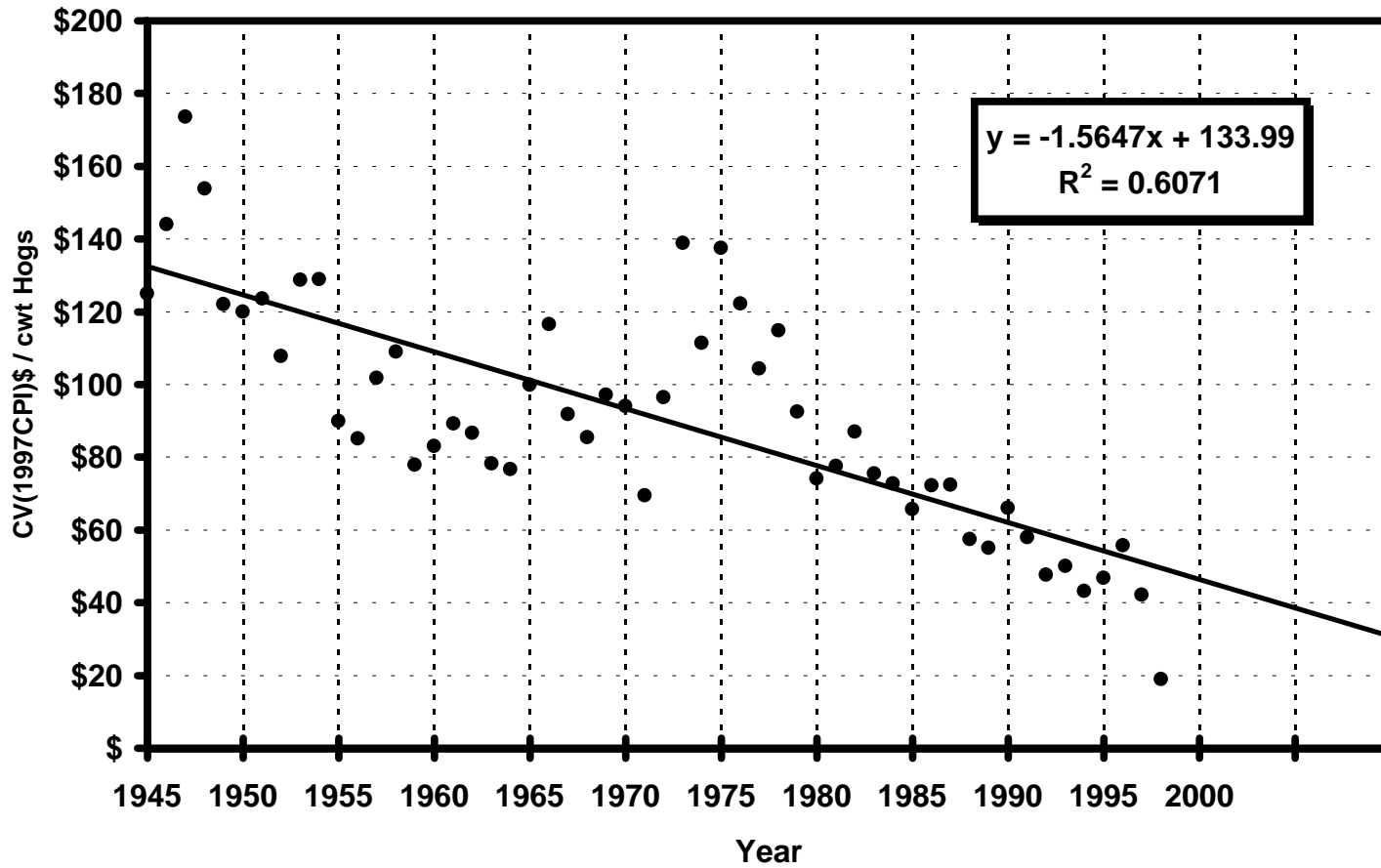
Sheet1

1958	19.60	28.90	0.18	108.85\$	
1959	14.10	29.10	0.18	77.77\$	
1960	15.30	29.60	0.18	82.96\$	
1961	16.60	29.90	0.19	89.11\$	
1962	16.30	30.20	0.19	86.63\$	
1963	14.90	30.60	0.19	78.15\$	
1964	14.80	31.00	0.19	76.63\$	
1965	19.60	31.50	0.20	99.87\$	
1966	23.50	32.40	0.20	116.41\$	
1967	19.10	33.40	0.21	91.78\$	
1968	18.50	34.80	0.22	85.32\$	
1969	22.20	36.70	0.23	97.09\$	
1970	22.70	38.80	0.24	93.90\$	
1971	17.50	40.50	0.25	69.35\$	
1972	25.10	41.80	0.26	96.38\$	
1973	38.40	44.40	0.28	138.81\$	
1974	34.20	49.30	0.31	111.34\$	
1975	46.10	53.80	0.34	137.53\$	
1976	43.30	56.90	0.35	122.14\$	
1977	39.40	60.60	0.38	104.35\$	
1978	46.60	65.20	0.41	114.71\$	
1979	41.80	72.60	0.45	92.41\$	
1980	38.00	82.40	0.51	74.02\$	
1981	43.90	90.90	0.57	77.51\$	
1982	52.30	96.50	0.60	86.99\$	
1983	46.80	99.60	0.62	75.42\$	
1984	47.10	103.90	0.65	72.76\$	
1985	44.00	107.60	0.67	65.63\$	
1986	49.30	109.60	0.68	72.20\$	
1987	51.20	113.60	0.71	72.34\$	
1988	42.30	118.30	0.74	57.39\$	
1989	42.50	124.00	0.77	55.01\$	
1990	53.70	130.70	0.81	65.94\$	
1991	49.10	136.20	0.85	57.86\$	
1992	41.60	140.30	0.87	47.59\$	
1993	44.94	144.50	0.90	49.92\$	
1994	39.90	148.20	0.92	43.21\$	
1995	44.30	152.40	0.95	46.65\$	
1996	54.40	156.90	0.98	55.65\$	
1997	42.50	160.50	1.01	42.08\$	
1998	19.20		1.02	18.82\$	
1999					
2000					

Hog prices in CV(1997-CPI)/cwt source: USDA-NASS

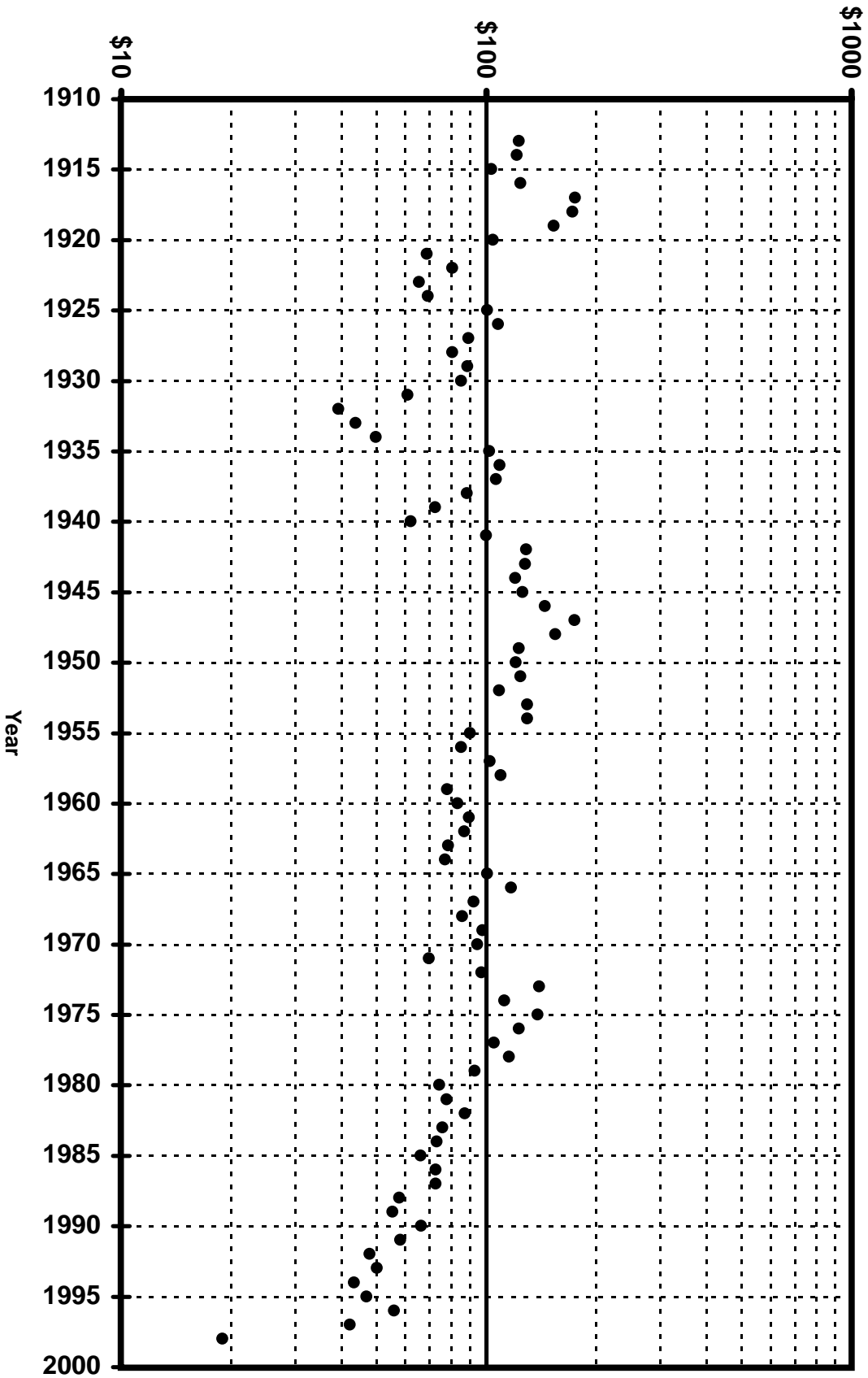


Hog Prices in CV(1997CPI)\$ / cwt 1945-1993 w extrapolation to 2010
source: USDA-NASS



HOGS1

CV (1997CPI)\$/cwt LOG Scale



Hog prices in CV(1997-CPI)/\$/cwt source: USDA-NASS

Chart 3

Hog Prices in CV(1997CPI)\$ / cwt 1945-1993 source: USDA-NASS

